

## 6 Bristol Circuit Goonellabah

### Table of Contents

- | [Property Details](#)
- | [Photo Gallery](#)
- | [Map](#)
- | [Contact For Inspection](#)

## Property Details

**6 Bristol Circuit, GOONELLABAH**



**SOLD BY THE WAL MURRAY TEAM**

4  2  3 

This impressive single-storey Goonellabah home is oozing with potential, just a short walk away from Hepburn Park, local schools and all the facilities available at Lismore Workers Sports Club.

The four-bedroom brick home is fully tiled and centres around a practical kitchen with a large corner pantry and breakfast bar. It's fitted out with a dishwasher, wall-oven and electric stove top, along with a double sink which overlooks the outdoor dining area.

The heart of the home is surrounded by two expansive living spaces. Great for entertaining or winding down. Parents can retreat to the main bedroom which includes a generously sized ensuite and walk-in wardrobe.

Ducted air-conditioning flows through three other rooms to ensure they are kept at a comfortable temperature, all are carpeted and equipped with built-ins.

The main bathroom has a shower, vanity and shallow bath - ideal for children, as well as a separate toilet.

After a long day, come home and park in a secure double-bay garage which offers access to the home office and patio, while a 2.3m high shed serves as a home for the work vehicle or trailer.

A property of this calibre isn't expected to be on the market long.

Contact Harry to arrange an inspection today.

- 4 Bedrooms
- 2 Bathrooms
- 3 Garages
- 1 Ensuite
- Ducted Cooling
- Ducted Heating
- Remote Garage
- Secure Parking
- Outdoor Entertaining
- Shed
- Built In Robes
- Dishwasher

---

**\$799,000**



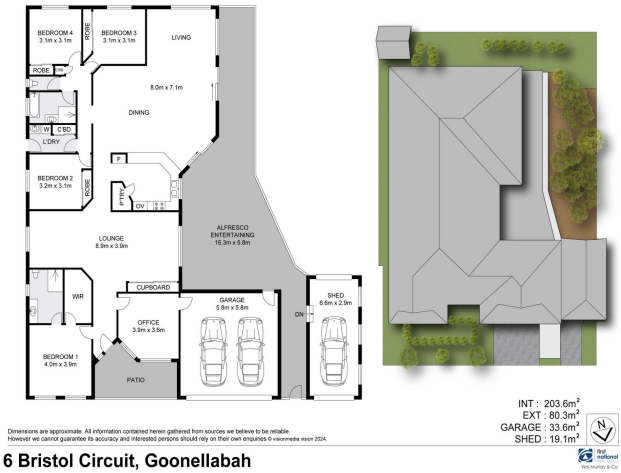
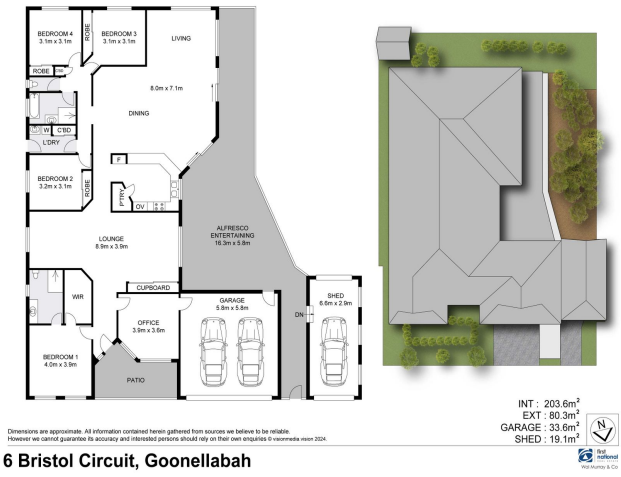
## Photo Gallery



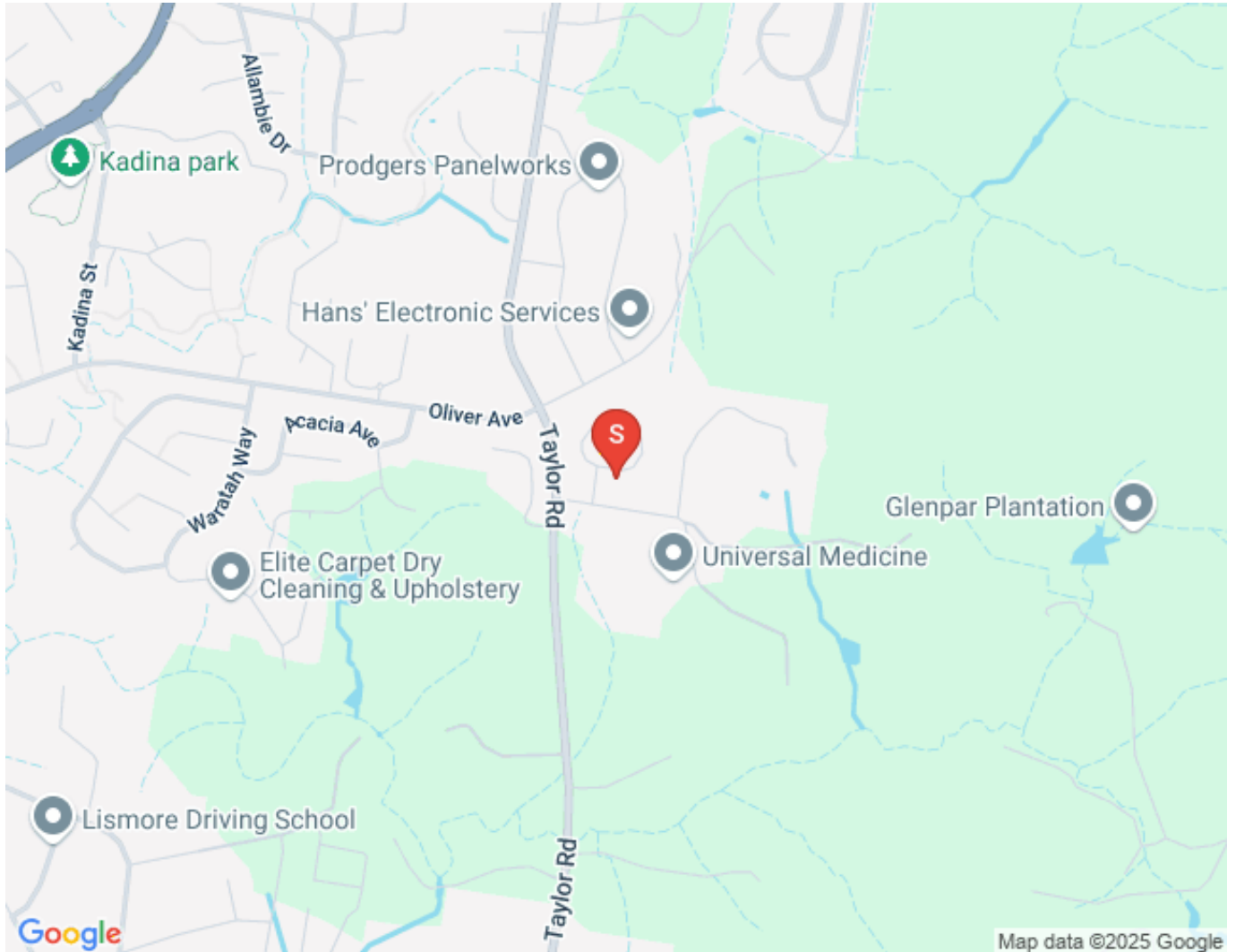








## Map





[lismore@walmurray.com.au](mailto:lismore@walmurray.com.au)